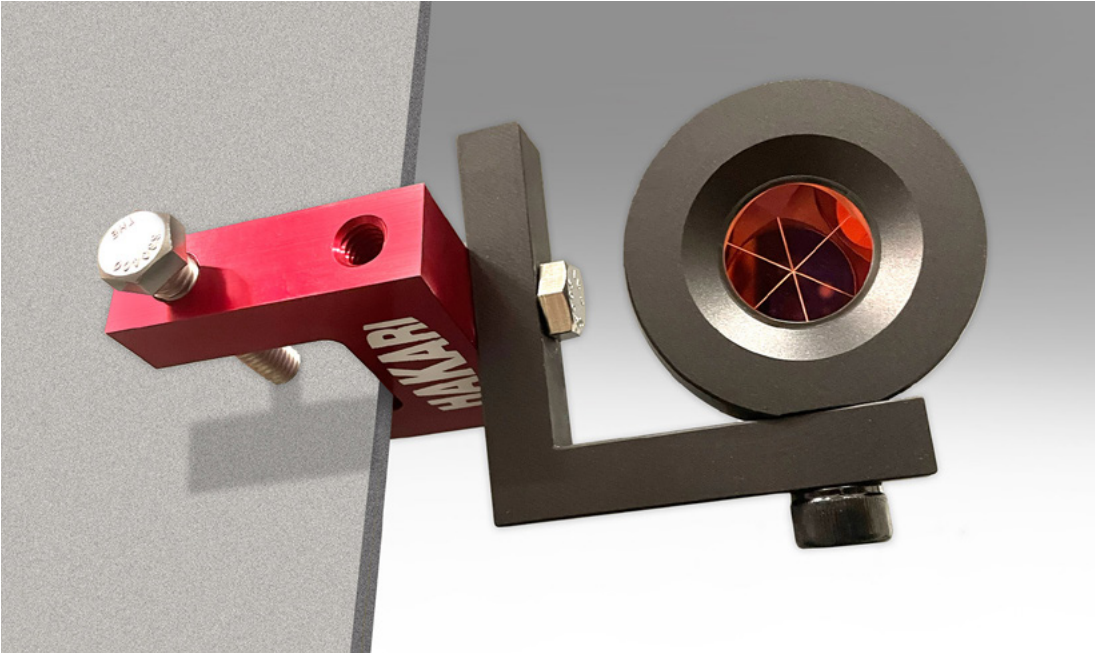


# BEAM CLAMP FOR PRISMS

UNIVERSAL 6061 ALUMINUM BEAM CLAMP FOR ATTACHING PRISMS TO STEEL  
ARTICLE NUMBER: HKR-125



## DESCRIPTION

- Universal aluminum beam clamp for attaching prisms to steel

## MATERIAL/CONSTRUCTION

- 6061 aluminum

## MILLED FINISH

- Red anodized with laser etched logo

## PERFORMANCE

- Can clamp up to 1 3/16"  
-60 degrees Celsius to 80 degrees Celsius

## PACKAGING

- Dimensions 2.375" x 2.375" x 0.75"

QUANTITY DISCOUNTS AVAILABLE

