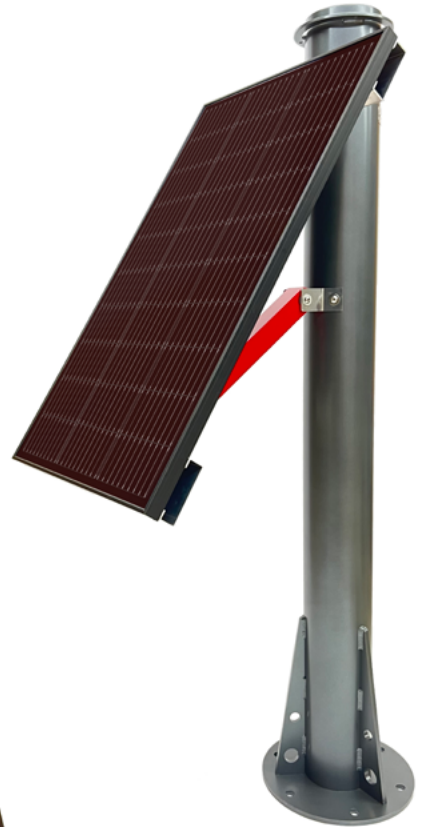




## SIDE OF POLE PV SYSTEM

The Side of Pole PV System by HAKARI™ is designed to bolt onto pre-existing threaded holes on our 72" Metrologist Monument. It is suitable for powering GNSS receivers and a wide range of geotechnical equipment, and is often used in conjunction with our heavy duty powdered coated equipment enclosures. Constructed of CNC machined 6061 aluminum for weight performance, yet designed for maximum dimensional stability, wind loading, and the harshest environmental conditions. Its single strut design is the ideal combination of aesthetics and ease of use. The angle of the included monocrystalline panel can be easily adjusted with only one clevis pin. The Side of Pole comes standard with 100 watts of power and a pleasing red powder coated articulating arm. Come explore our power solutions that enable measurement experts to accurately gather, analyze, and leverage data in order to unlock the best possible decision making.



### GENERAL

#### Frame

CNC machined 0.25" 6061 aluminum frame construction

#### Side of Pole mount

Four 3/8-16 stainless steel bolts (included)

#### Frame fasteners

3/8-16 stainless steel bolts (included)

#### Tilt

Clevis pin adjustable panel tilt 4.0 to 75.0 degrees

#### Weight

25 pounds

#### Height

36" panel height, 72" Metrologist monument height

#### Size

Circular footprint = 33"

#### Finish

Bare aluminum and red powder coated articulating arm



### POWER

#### Frame

Rigid high strength aluminum frame

#### Panel

100 watt monocrystalline panel certified to IP68 and 130 mph winds

#### Current

6.3 amps

#### Voltage

Open circuit voltage = 20.3 VDC

#### Power

100 watts

